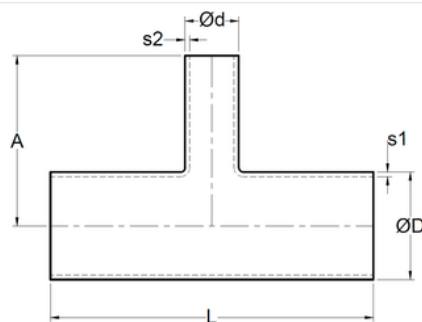
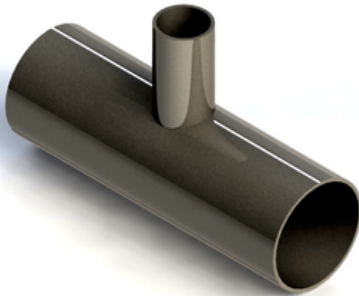


Tee reducción 3A Tangent Eccentric Tee



SIZE	ØD	Ød	L	s1	A	s2	# Parte / Ac. Inox 304	# Parte / Ac. Inox 316L
3/4"x1/2"	0.750" 19.05 mm	0.500" 12.7 mm	4.250" 107.95 mm	0.065" 1.65 mm	2.000" 50.8 mm	0.065" 1.65 mm	C13304 0705	C13316L 0705
1"x1/2"	1.000" 25.4 mm	0.500" 12.7 mm	4.250" 107.95 mm	0.065" 1.65 mm	2.000" 50.8 mm	0.065" 1.65 mm	C13304 1005	C13316L 1005
1"x3/4"	1.000" 25.4 mm	0.750" 19.05 mm	4.250" 107.95 mm	0.065" 1.65 mm	2.125" 53.975 mm	0.065" 1.65 mm	C13304 1007	C13316L 1007
1-1/2"x1/2"	1.500" 38.1 mm	0.500" 12.7 mm	4.500" 114.3 mm	0.065" 1.65 mm	2.375" 60.325 mm	0.065" 1.65 mm	C13304 1505	C13316L 1505
1-1/2"x3/4"	1.500" 38.1 mm	0.750" 19.05 mm	4.500" 114.3 mm	0.065" 1.65 mm	2.375" 60.325 mm	0.065" 1.65 mm	C13304 1507	C13316L 1507
1-1/2"x1"	1.500" 38.1 mm	1.000" 25.4 mm	4.500" 114.3 mm	0.065" 1.65 mm	2.375" 60.325 mm	0.065" 1.65 mm	C13304 1510	C13316L 1510
2" x 1/2"	2.000" 50.8 mm	0.500" 12.7 mm	6.000" 152.4 mm	0.065" 1.65 mm	2.625" 66.675 mm	0.065" 1.65 mm	C13304 2005	C13316L 2005
2" x 3/4"	2.000" 50.8 mm	0.750" 19.05 mm	6.000" 152.4 mm	0.065" 1.65 mm	2.625" 66.675 mm	0.065" 1.65 mm	C13304 2007	C13316L 2007
2" x 1"	2.000" 50.8 mm	1.000" 25.4 mm	6.000" 152.4 mm	0.065" 1.65 mm	2.625" 66.675 mm	0.065" 1.65 mm	C13304 2010	C13316L 2010
2" x 1-1/2"	2.000" 50.8 mm	1.500" 38.1 mm	6.000" 152.4 mm	0.065" 1.65 mm	2.625" 66.675 mm	0.065" 1.65 mm	C13304 2015	C13316L 2015
2-1/2"x1/2"	2.500" 63.5 mm	0.500" 12.7 mm	6.000" 152.4 mm	0.065" 1.65 mm	2.875" 73.025 mm	0.065" 1.65 mm	C13304 2505	C13316L 2505
2-1/2"x3/4"	2.500" 63.5 mm	0.750" 19.05 mm	6.000" 152.4 mm	0.065" 1.65 mm	2.875" 73.025 mm	0.065" 1.65 mm	C13304 2507	C13316L 2507
2-1/2"x1"	2.500" 63.5 mm	1.000" 25.4 mm	6.000" 152.4 mm	0.065" 1.65 mm	2.875" 73.025 mm	0.065" 1.65 mm	C13304 2510	C13316L 2510
2-1/2"x1-1/2"	2.500" 63.5 mm	1.500" 38.1 mm	6.000" 152.4 mm	0.065" 1.65 mm	2.875" 73.025 mm	0.065" 1.65 mm	C13304 2515	C13316L 2515
2-1/2"x2"	2.500" 63.5 mm	2.000" 50.8 mm	6.000" 152.4 mm	0.065" 1.65 mm	2.875" 73.025 mm	0.065" 1.65 mm	C13304 2520	C13316L 2520
3" x 1/2"	3.000" 76.2 mm	0.500" 12.7 mm	6.500" 165.1 mm	0.065" 1.65 mm	3.125" 79.375 mm	0.065" 1.65 mm	C13304 3005	C13316L 3005
3" x 3/4"	3.000" 76.2 mm	0.750" 19.05 mm	6.500" 165.1 mm	0.065" 1.65 mm	3.125" 79.375 mm	0.065" 1.65 mm	C13304 3007	C13316L 3007
3" x 1"	3.000" 76.2 mm	1.000" 25.4 mm	6.500" 165.1 mm	0.065" 1.65 mm	3.125" 79.375 mm	0.065" 1.65 mm	C13304 3010	C13316L 3010
3" x 1-1/2"	3.000" 76.2 mm	1.500" 38.1 mm	6.500" 165.1 mm	0.065" 1.65 mm	3.125" 79.375 mm	0.065" 1.65 mm	C13304 3015	C13316L 3015
3" x 2"	3.000" 76.2 mm	2.000" 50.8 mm	6.500" 165.1 mm	0.065" 1.65 mm	3.125" 79.375 mm	0.065" 1.65 mm	C13304 3020	C13316L 3020
3" x 2-1/2"	3.000" 76.2 mm	2.500" 63.5 mm	6.500" 165.1 mm	0.065" 1.65 mm	3.125" 79.375 mm	0.065" 1.65 mm	C13304 3025	C13316L 3025
4" x 1/2"	4.000" 101.6 mm	0.500" 12.7 mm	7.750" 196.85 mm	0.083" 2.108 mm	3.625" 92.075 mm	0.065" 1.65 mm	C13304 4005	C13316L 4005
4" x 3/4"	4.000" 101.6 mm	0.750" 19.05 mm	7.750" 196.85 mm	0.083" 2.108 mm	3.625" 92.075 mm	0.065" 1.65 mm	C13304 4007	C13316L 4007
4" x 1"	4.000" 101.6 mm	1.000" 25.4 mm	7.750" 196.85 mm	0.083" 2.108 mm	3.625" 92.075 mm	0.065" 1.65 mm	C13304 4010	C13316L 4010
4" x 1-1/2"	4.000" 101.6 mm	1.500" 38.1 mm	7.750" 196.85 mm	0.083" 2.108 mm	3.625" 92.075 mm	0.065" 1.65 mm	C13304 4015	C13316L 4015
4" x 2"	4.000" 101.6 mm	2.000" 50.8 mm	7.750" 196.85 mm	0.083" 2.108 mm	3.625" 92.075 mm	0.065" 1.65 mm	C13304 4020	C13316L 4020
4" x 2-1/2"	4.000" 101.6 mm	2.500" 63.5 mm	7.750" 196.85 mm	0.083" 2.108 mm	3.625" 92.075 mm	0.065" 1.65 mm	C13304 4025	C13316L 4025
4" x 3"	4.000" 101.6 mm	3.000" 76.2 mm	7.750" 196.85 mm	0.083" 2.108 mm	3.625" 92.075 mm	0.065" 1.65 mm	C13304 4030	C13316L 4030
6" x 1-1/2"	6.000" 152.4 mm	2.000" 50.8 mm	11.250" 285.75 mm	0.109" 2.768 mm	4.875" 123.825 mm	0.065" 1.65 mm	C13304 6015	C13316L 6015
6" x 2"	6.000" 152.4 mm	2.000" 50.8 mm	11.250" 285.75 mm	0.109" 2.768 mm	5.125" 130.175 mm	0.065" 1.65 mm	C13304 6020	C13316L 6020
6" x 3"	6.000" 152.4 mm	3.000" 76.2 mm	10.000" 254 mm	0.109" 2.768 mm	5.125" 130.175 mm	0.065" 1.65 mm	C13304 6030	C13316L 6030
6" x 4"	6.000" 152.4 mm	4.000" 101.6 mm	10.000" 254 mm	0.109" 2.768 mm	5.125" 130.175 mm	0.083" 2.108 mm	C13304 6040	C13316L 6040