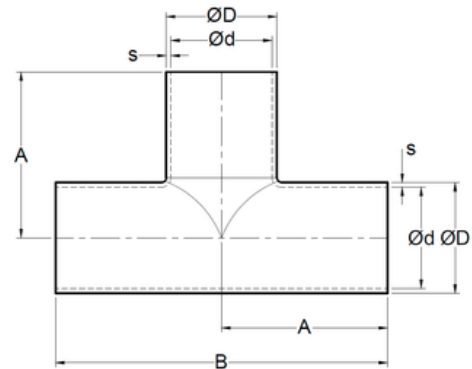
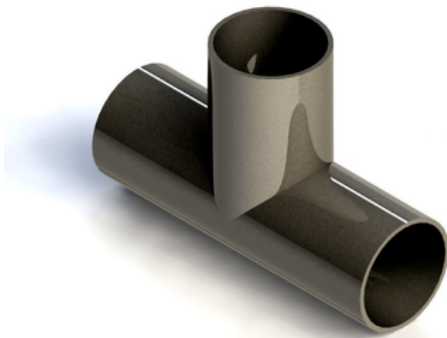


Tee recta 3A Long Concentric Tee



SIZE	ØD	Ød	A	B	s	# Parte / Ac. Inox 304	# Parte / Ac. Inox 316L
1/2"	0.500" 12.7 mm	0.370" 9.398 mm	0.750" 19.05 mm	3.750" 95.25 mm	0.065" 1.65 mm	C06304 05	C06316L 05
3/4"	0.750" 19.05 mm	0.620" 15.758 mm	1.875" 47.625 mm	3.750" 95.25 mm	0.065" 1.65 mm	C06304 07	C06316L 07
1"	1.000" 25.4 mm	0.870" 22.098 mm	1.875" 47.625 mm	3.750" 95.25 mm	0.065" 1.65 mm	C06304 10	C06316L 10
1-1/2"	1.500" 38.1 mm	1.370" 34.798 mm	2.250" 57.15 mm	4.500" 114.3 mm	0.065" 1.65 mm	C06304 15	C06316L 15
2"	2.000" 50.8 mm	1.870" 47.498 mm	3.000" 76.2 mm	6.000" 152.4 mm	0.065" 1.65 mm	C06304 20	C06316L 20
2-1/2"	2.500" 63.5 mm	2.370" 60.198 mm	3.000" 76.2 mm	6.000" 152.4 mm	0.065" 1.65 mm	C06304 25	C06316L 25
3"	3.000" 76.2 mm	2.870" 72.898 mm	3.250" 82.55 mm	6.500" 165.1 mm	0.065" 1.65 mm	C06304 30	C06316L 30
4"	4.000" 101.6 mm	3.834" 97.383 mm	3.875" 98.425 mm	7.750" 196.85 mm	0.083" 2.108 mm	C06304 40	C06316L 40
6"	6.000" 152.4 mm	5.782" 146.862 mm	5.000" 127.0 mm	10.000" 254 mm	0.109" 2.768 mm	C06304 60	C06316L 60