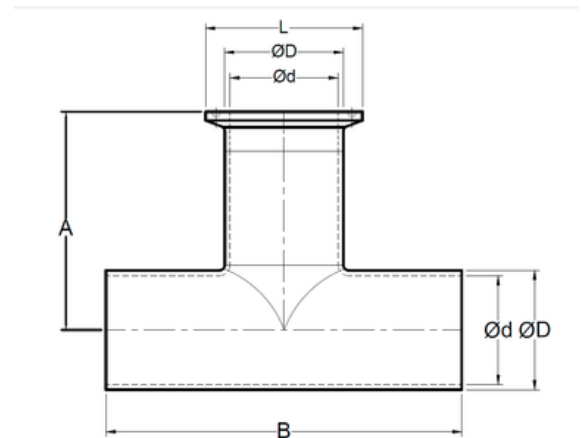
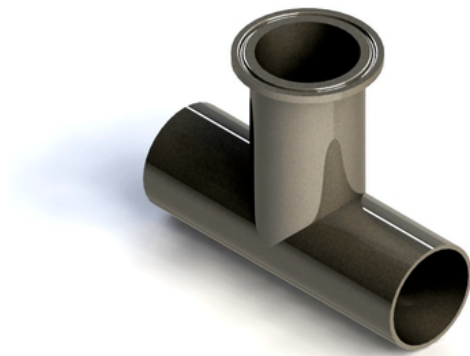


Tee recta, extremos soldable x soldable x clamp *Tee Weld-Weld-Ferrule*



SIZE	ØD	Ød	L	A	B	# Parte / Ac. Inox 304	# Parte / Ac. Inox 316L
1/2"	0.500" 12.7 mm	0.370" 9.398 mm	0.984" 24.99 mm	2.375" 60.325 mm	3.750" 95.25 mm	C61304 05	C61316L 05
3/4"	0.750" 19.05 mm	0.620" 15.758 mm	0.984" 24.99 mm	2.375" 60.325 mm	3.750" 95.25 mm	C61304 07	C61316L 07
1"	1.000" 25.4 mm	0.870" 22.098 mm	1.984" 50.393 mm	2.375" 60.325 mm	3.750" 95.25 mm	C61304 10	C61316L 10
1-1/2"	1.500" 38.1 mm	1.370" 34.798 mm	1.984" 50.393 mm	2.750" 69.85 mm	4.500" 114.3 mm	C61304 15	C61316L 15
2"	2.000" 50.8 mm	1.870" 47.498 mm	2.516" 63.9 mm	3.500" 88.9 mm	6.000" 152.4 mm	C61304 20	C61316L 20
2-1/2"	2.500" 63.5 mm	2.370" 60.198 mm	3.047" 77.393 mm	3.500" 88.9 mm	6.000" 152.4 mm	C61304 25	C61316L 25
3"	3.000" 76.2 mm	2.870" 72.898 mm	3.579" 90.9 mm	3.750" 95.25 mm	6.500" 165.1 mm	C61304 30	C61316L 30
4"	4.000" 101.6 mm	3.834" 97.383 mm	4.682" 118.922 mm	4.500" 114.3 mm	7.750" 196.85 mm	C61304 40	C61316L 40
6"	6.000" 152.4 mm	5.782" 146.862 mm	6.570" 166.878 mm	5.875" 149.225 mm	10.000" 254 mm	C61304 60	C61316L 60