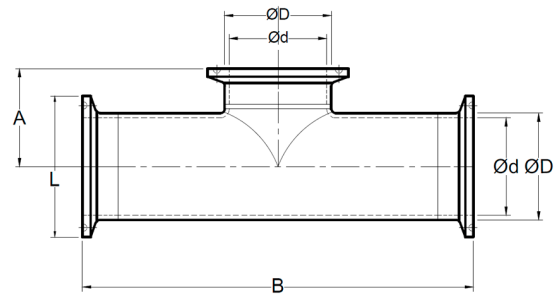
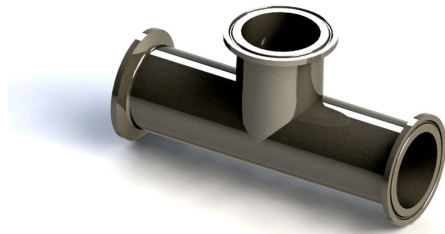


Tee recta, extremos clamp *3A Short Tee with Ferrule*



SIZE	ØD	Ød	L	A	B	# Parte / Ac. Inox 304	# Parte / Ac. Inox 316L
1/2"	0.500" 12.7 mm	0.370" 9.398 mm	0.984" 24.99 mm	1.000" 25.4 mm	4.500" 114.3 mm	C56304 05	C56316L 05
3/4"	0.750" 19.05 mm	0.620" 15.758 mm	0.984" 24.99 mm	1.125" 60.325 mm	4.750" 120.65 mm	C56304 07	C56316L 07
1"	1.000" 25.4 mm	0.870" 22.098 mm	1.984" 50.393 mm	1.125" 60.325 mm	4.750" 120.65 mm	C56304 10	C56316L 10
1-1/2"	1.500" 38.1 mm	1.370" 34.798 mm	1.984" 50.393 mm	1.375" 34.925 mm	5.500" 139.7 mm	C56304 15	C56316L 15
2"	2.000" 50.8 mm	1.870" 47.498 mm	2.516" 63.9 mm	1.625" 41.275 mm	7.000" 177.8 mm	C56304 20	C56316L 20
2-1/2"	2.500" 63.5 mm	2.370" 60.198 mm	3.047" 77.393 mm	1.875" 47.625 mm	7.000" 177.8 mm	C56304 25	C56316L 25
3"	3.000" 76.2 mm	2.870" 72.898 mm	3.579" 90.9 mm	2.125" 53.975 mm	7.500" 190.5 mm	C56304 30	C56316L 30
4"	4.000" 101.6 mm	3.834" 97.383 mm	4.682" 118.922 mm	2.750" 69.85 mm	9.000" 228.6 mm	C56304 40	C56316L 40
6"	6.000" 152.4 mm	5.782" 146.862 mm	6.570" 166.878 mm	4.625" 117.475 mm	11.750" 298.45 mm	C56304 60	C56316L 60