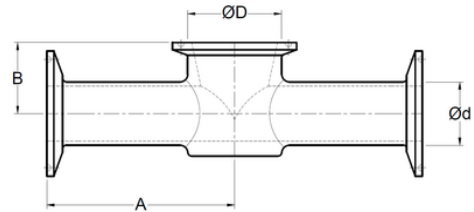
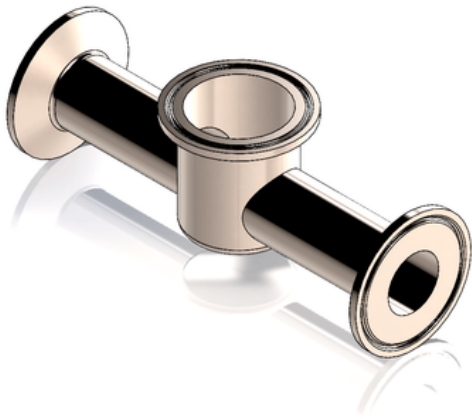


Tee para instrumento BPE centro corto,
extremos ferulados
Hygienic clamp joint: Instrument Tee



CODIGO	SIZE	Ød	ØD	A	B
A15 05x15	1/2" x 1-1/2"	0.500" 12.7 mm	1.500" 38.1 mm	3.000" 76.2 mm	0.875" 22.225 mm
A15 07x15	3/4" x 1-1/2"	0.750" 19.05 mm	1.500" 38.1 mm	3.000" 76.2 mm	1.000" 25.4 mm
A15 10x15	1" x 1-1/2"	1.000" 25.4 mm	1.500" 38.1 mm	3.000" 76.2 mm	1.125" 28.575 mm
A15 05x20	1/2" x 2"	0.500" 12.7 mm	2.000" 50.8 mm	3.250" 82.55 mm	1.000" 25.4 mm
A15 07x20	3/4" x 2"	0.750" 19.05 mm	2.000" 50.8 mm	3.250" 82.55 mm	1.125" 28.575 mm
A15 10x20	1" x 2"	1.000" 25.4 mm	2.000" 50.8 mm	3.250" 82.55 mm	1.250" 31.75 mm
A15 15x20	1-1/2" x 2"	1.500" 38.1 mm	2.000" 50.8 mm	3.250" 82.55 mm	1.500" 38.1 mm