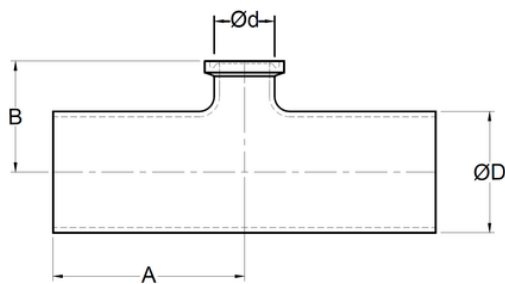
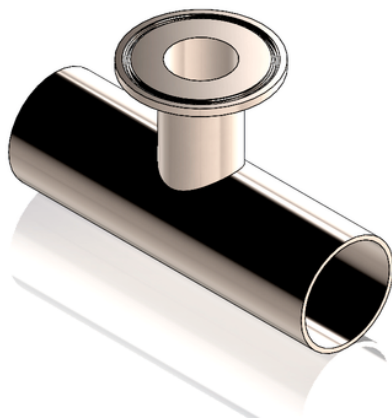


## Tee Reducción BPE, centro corto extremos AWF x AWF x Férula clamp *Automatic tube Weld: Short outlet hygienic clamp joint, Reducing Tee*



CODIGO	SIZE	ØD	Ød	A	B
A26 07x05	3/4" x 1/2"	0.750" 19.05 mm	0.500" 12.7 mm	2.000" 50.8 mm	1.000" 25.4 mm
A26 10x05	1" x 1/2"	1.000" 25.4 mm	0.500" 12.7 mm	2.125" 53.975 mm	1.125" 28.575 mm
A26 10x07	1" x 3/4"	1.000" 25.4 mm	0.750" 19.05 mm	2.125" 53.975 mm	1.125" 28.575 mm
A26 15x05	1-1/2" x 1/2"	1.500" 38.1 mm	0.500" 12.7 mm	2.375" 60.325 mm	1.375" 34.925 mm
A26 15x07	1-1/2" x 3/4"	1.500" 38.1 mm	0.750" 19.05 mm	2.375" 60.325 mm	1.375" 34.925 mm
A26 15x10	1-1/2" x 1"	1.500" 38.1 mm	1.000" 25.4 mm	2.375" 60.325 mm	1.375" 34.925 mm
A26 20x05	2" x 1/2"	2.000" 50.8 mm	0.500" 12.7 mm	2.875" 73.025 mm	1.625" 41.275 mm
A26 20x07	2" x 3/4"	2.000" 50.8 mm	0.750" 19.05 mm	2.875" 73.025 mm	1.625" 41.275 mm
A26 20x10	2" x 1"	2.000" 50.8 mm	1.000" 25.4 mm	2.875" 73.025 mm	1.625" 41.275 mm
A26 20x15	2" x 1-1/2"	2.000" 50.8 mm	1.500" 38.1 mm	2.875" 73.025 mm	1.625" 41.275 mm
A26 25x05	2-1/2" x 1/2"	2.500" 63.5 mm	0.500" 12.7 mm	3.125" 79.375 mm	1.875" 47.625 mm
A26 25x07	2-1/2" x 3/4"	2.500" 63.5 mm	0.750" 19.05 mm	3.125" 79.375 mm	1.875" 47.625 mm
A26 25x10	2-1/2" x 1"	2.500" 63.5 mm	1.000" 25.4 mm	3.125" 79.375 mm	1.875" 47.625 mm
A26 25x15	2-1/2" x 1-1/2"	2.500" 63.5 mm	1.500" 38.1 mm	3.125" 79.375 mm	1.875" 47.625 mm
A26 25x20	2-1/2" x 2"	2.500" 63.5 mm	2.000" 50.8 mm	3.125" 79.375 mm	1.875" 47.625 mm
A26 30x05	3" x 1/2"	3.000" 76.2 mm	0.500" 12.7 mm	3.375" 85.725 mm	2.125" 53.975 mm
A26 30x07	3" x 3/4"	3.000" 76.2 mm	0.750" 19.05 mm	3.375" 85.725 mm	2.125" 53.975 mm
A26 30x10	3" x 1"	3.000" 76.2 mm	1.000" 25.4 mm	3.375" 85.725 mm	2.125" 53.975 mm
A26 30x15	3" x 1-1/2"	3.000" 76.2 mm	1.500" 38.1 mm	3.375" 85.725 mm	2.125" 53.975 mm
A26 30x20	3" x 2"	3.000" 76.2 mm	2.000" 50.8 mm	3.375" 85.725 mm	2.125" 53.975 mm
A26 30x25	3" x 2-1/2"	3.000" 76.2 mm	2.500" 63.5 mm	3.375" 85.725 mm	2.125" 53.975 mm
A26 40x05	4" x 1/2"	4.000" 76.2 mm	0.500" 12.7 mm	4.125" 104.775 mm	2.625" 66.675 mm
A26 40x07	4" x 3/4"	4.000" 76.2 mm	0.750" 19.05 mm	4.125" 104.775 mm	2.625" 66.675 mm
A26 40x10	4" x 1"	4.000" 76.2 mm	1.000" 25.4 mm	4.125" 104.775 mm	2.625" 66.675 mm
A26 40x15	4" x 1-1/2"	4.000" 76.2 mm	1.500" 38.1 mm	4.125" 104.775 mm	2.625" 66.675 mm
A26 40x20	4" x 2"	4.000" 76.2 mm	2.000" 50.8 mm	4.125" 104.775 mm	2.625" 66.675 mm
A26 40x25	4" x 2-1/2"	4.000" 76.2 mm	2.500" 63.5 mm	4.125" 104.775 mm	2.625" 66.675 mm
A26 40x30	4" x 3"	4.000" 76.2 mm	3.000" 76.2 mm	4.125" 104.775 mm	2.625" 66.675 mm
A26 60x05	6" x 1/2"	6.000" 152.4 mm	0.500" 12.7 mm	5.625" 142.875 mm	3.625" 92.075 mm
A26 60x07	6" x 3/4"	6.000" 152.4 mm	0.750" 19.05 mm	5.625" 142.875 mm	3.625" 92.075 mm
A26 60x10	6" x 1"	6.000" 152.4 mm	1.000" 25.4 mm	5.625" 142.875 mm	3.625" 92.075 mm
A26 60x15	6" x 1-1/2"	6.000" 152.4 mm	1.500" 38.1 mm	5.625" 142.875 mm	3.625" 92.075 mm
A26 60x20	6" x 2"	6.000" 152.4 mm	2.000" 50.8 mm	5.625" 142.875 mm	3.625" 92.075 mm
A26 60x25	6" x 2-1/2"	6.000" 152.4 mm	2.500" 63.5 mm	5.625" 142.875 mm	3.625" 92.075 mm
A26 60x30	6" x 3"	6.000" 152.4 mm	3.000" 76.2 mm	5.625" 142.875 mm	3.625" 92.075 mm
A26 60x40	6" x 4"	6.000" 152.4 mm	4.000" 76.2 mm	5.625" 142.875 mm	3.750" 95.25 mm