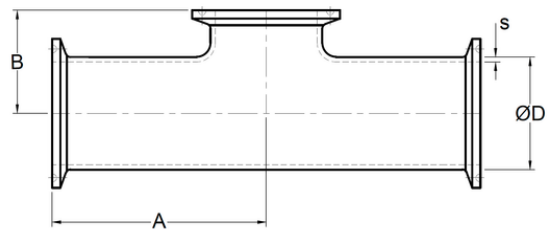
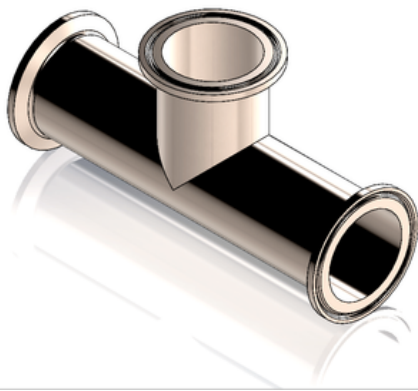


## Tee Recta BPE centro corto, extremos ferulados

*Hygienic clamp joint: Short Outlet Tee*



CODIGO	SIZE	ØD	A	B	s
A14 05	1/2"	0.500" 12.7 mm	2.250" 57.15 mm	1.000" 25.4 mm	0.065" 1.65 mm
A14 07	3/4"	0.750" 19.05 mm	2.375" 60.325 mm	1.125" 28.575 mm	0.065" 1.65 mm
A14 10	1"	1.000" 25.4 mm	2.625" 66.675 mm	1.125" 28.575 mm	0.065" 1.65 mm
A14 15	1-1/2"	1.500" 38.1 mm	2.875" 73.025 mm	1.375" 34.925 mm	0.065" 1.65 mm
A14 20	2"	2.000" 50.8 mm	3.375" 85.725 mm	1.625" 41.275 mm	0.065" 1.65 mm
A14 25	2-1/2"	2.500" 63.5 mm	3.625" 92.075 mm	1.875" 47.625 mm	0.065" 1.65 mm
A14 30	3"	3.000" 76.2 mm	3.875" 98.425 mm	2.125" 53.975 mm	0.065" 1.65 mm
A14 40	4"	4.000" 101.6 mm	4.750" 120.65 mm	2.750" 69.85 mm	0.083" 2.108 mm
A14 60	6"	6.000" 152.4 mm	7.125" 180.975 mm	4.625" 117.475 mm	0.109" 2.768 mm