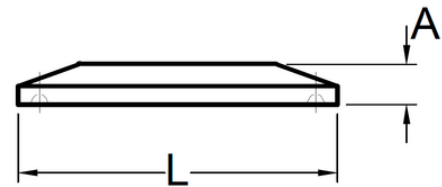
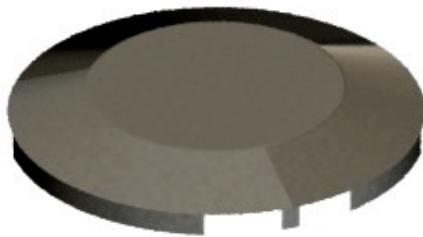


## Tapón sólido clamp BPE

*Hygienic clamp joint: Solid end cap*



CODIGO	SIZE	L	A
A13 05	1/2"	0.984" 24.99 mm	0.187" 4.749 mm
A13 07	3/4"	0.984" 24.99 mm	0.187" 4.749 mm
A13 10	1"	1.984" 50.39 mm	0.250" 6.35 mm
A13 15	1-1/2"	1.984" 50.39 mm	0.250" 6.35 mm
A13 20	2"	2.516" 63.9 mm	0.250" 6.35 mm
A13 25	2-1/2"	3.047" 77.393 mm	0.250" 6.35 mm
A13 30	3"	3.579" 90.906 mm	0.250" 6.35 mm
A13 40	4"	4.682" 118.922 mm	0.312" 7.924 mm
A13 60	6"	6.570" 166.878 mm	0.437" 11.09 mm