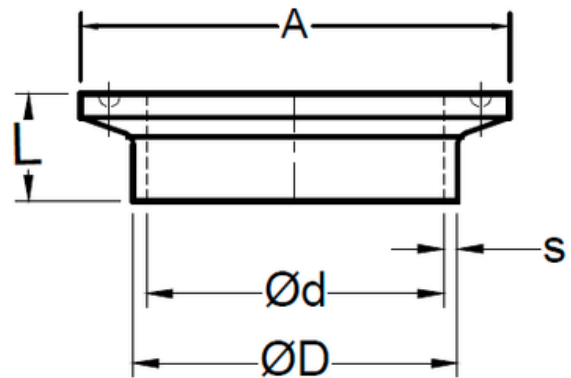
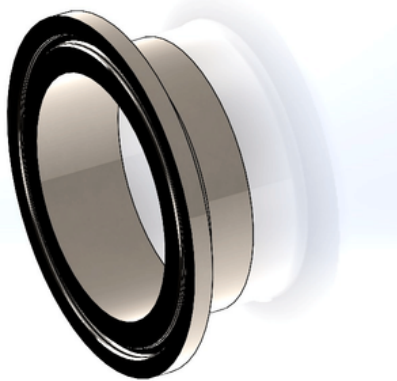


## Férula corta clamp *Short Ferrule*



SIZE	ØD	Ød	A	L	s	# Parte / Ac. Inox 304	# Parte / Ac. Inox 316L
1/2"	0.500" 12.7 mm	0.370" 9.398 mm	0.984" 24.99 mm	0.500" 12.7 mm	0.065" 1.65 mm	C51304 05	C51316L 05
3/4"	0.750" 19.05 mm	0.620" 15.758 mm	0.984" 24.99 mm	0.500" 12.7 mm	0.065" 1.65 mm	C51304 07	C51316L 07
1"	1.000" 25.4 mm	0.870" 22.098 mm	1.984" 50.393 mm	0.500" 12.7 mm	0.065" 1.65 mm	C51304 10	C51316L 10
1-1/2"	1.500" 38.1 mm	1.370" 34.798 mm	1.984" 50.393 mm	0.500" 12.7 mm	0.065" 1.65 mm	C51304 15	C51316L 15
2"	2.000" 50.8 mm	1.870" 47.498 mm	2.516" 63.9 mm	0.500" 12.7 mm	0.065" 1.65 mm	C51304 20	C51316L 20
2-1/2"	2.500" 63.5 mm	2.370" 60.198 mm	3.047" 77.393 mm	0.500" 12.7 mm	0.065" 1.65 mm	C51304 25	C51316L 25
3"	3.000" 76.2 mm	2.870" 72.898 mm	3.579" 90.9 mm	0.500" 12.7 mm	0.065" 1.65 mm	C51304 30	C51316L 30
4"	4.000" 101.6 mm	3.834" 97.383 mm	4.682" 118.922 mm	0.625" 15.875 mm	0.083" 2.108 mm	C51304 40	C51316L 40
6"	6.000" 152.4 mm	5.782" 146.862 mm	6.570" 166.878 mm	0.875" 22.225 mm	0.109" 2.768 mm	C51304 60	C51316L 60