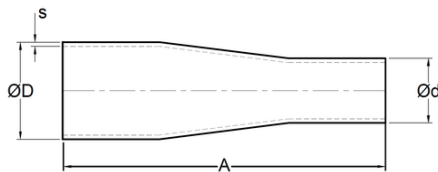
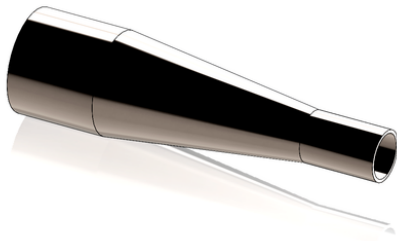


## Reducción concéntrica BPE

*Automatic tube weld: Concentric Reducer*



CODIGO	SIZE	ØD	Ød	A	s
A05 07x05	3/4" x 1/2"	0.750" 19.05 mm	0.500" 12.7 mm	4.000" 101.6 mm	0.065" 1.65 mm
A05 10x05	1" x 1/2"	1.000" 25.4 mm	0.500" 12.7 mm	4.500" 114.3 mm	0.065"
A05 10x07	1" x 3/4"	1.000" 25.4 mm	0.750" 19.05 mm	4.000" 101.6 mm	0.065" 1.65 mm
A05 15x05	1-1/2" x 1/2"	1.500" 38.1 mm	0.500" 12.7 mm	5.500" 139.7 mm	0.065" 1.65 mm
A05 15x07	1-1/2" x 3/4"	1.500" 38.1 mm	0.750" 19.05 mm	5.000" 127 mm	0.065" 1.65 mm
A05 15x10	1-1/2" x 1"	1.500" 38.1 mm	1.000" 25.4 mm	5.000" 127.0 mm	0.065" 1.65 mm
A05 20x05	2" x 1/2"	2.000" 50.8 mm	0.500" 12.7 mm	7.750" 196.85 mm	0.065" 1.65 mm
A05 20x07	2" x 3/4"	2.000" 50.8 mm	0.750" 19.05 mm	7.250" 184.15 mm	0.065" 1.65 mm
A05 20x10	2" x 1"	2.000" 50.8 mm	1.000" 25.4 mm	7.250" 184.15 mm	0.065" 1.65 mm
A05 20x15	2" x 1-1/2"	2.000" 50.8 mm	1.500" 38.1 mm	5.250" 133.35 mm	0.065" 1.65 mm
A05 25x05	2-1/2" x 1/2"	2.500" 63.5 mm	0.500" 12.7 mm	9.750" 247.65 mm	0.065" 1.65 mm
A05 25x07	2-1/2" x 3/4"	2.500" 63.5 mm	0.750" 19.05 mm	9.250" 234.95 mm	0.065" 1.65 mm
A05 25x10	2-1/2" x 1"	2.500" 63.5 mm	1.000" 25.4 mm	9.250" 234.95 mm	0.065" 1.65 mm
A05 25x15	2-1/2" x 1-1/2"	2.500" 63.5 mm	1.500" 38.1 mm	7.250" 184.15 mm	0.065" 1.65 mm
A05 25x20	2-1/2" x 2"	2.500" 63.5 mm	2.000" 50.8 mm	5.500" 139.7 mm	0.065" 1.65 mm
A05 30x05	3" x 1/2"	3.000" 76.2 mm	0.500" 12.7 mm	11.750" 298.45 mm	0.065" 1.65 mm
A05 30x07	3" x 3/4"	3.000" 76.2 mm	0.750" 19.05 mm	11.250" 285.75 mm	0.065" 1.65 mm
A05 30x10	3" x 1"	3.000" 76.2 mm	1.000" 25.4 mm	11.250" 285.75 mm	0.065" 1.65 mm
A05 30x15	3" x 1-1/2"	3.000" 76.2 mm	1.500" 38.1 mm	9.250" 234.95 mm	0.065" 1.65 mm
A05 30x20	3" x 2"	3.000" 76.2 mm	2.000" 50.8 mm	7.500" 190.5 mm	0.065" 1.65 mm
A05 30x25	3" x 2-1/2"	3.000" 76.2 mm	2.500" 63.5 mm	5.500" 139.7 mm	0.065" 1.65 mm
A05 40x05	4" x 1/2"	4.000" 76.2 mm	0.500" 12.7 mm	16.000" 406.4 mm	0.083"
A05 40x07	4" x 3/4"	4.000" 76.2 mm	0.750" 19.05 mm	15.500" 393.7 mm	0.083"
A05 40x10	4" x 1"	4.000" 76.2 mm	1.000" 25.4 mm	15.500" 393.7 mm	0.083"
A05 40x15	4" x 1-1/2"	4.000" 76.2 mm	1.500" 38.1 mm	13.500" 342.9 mm	0.083"
A05 40x20	4" x 2"	4.000" 76.2 mm	2.000" 50.8 mm	11.750" 298.45 mm	0.083"
A05 40x25	4" x 2-1/2"	4.000" 76.2 mm	2.500" 63.5 mm	9.750" 247.65 mm	0.083"
A05 40x30	4" x 3"	4.000" 76.2 mm	3.000" 76.2 mm	7.750" 196.85 mm	0.083"
A05 60x30	6" x 3"	6.000" 152.4 mm	3.000" 76.2 mm	10.000" 254 mm	0.109"
A05 60x40	6" x 4"	6.000" 152.4 mm	4.000" 76.2 mm	10.000" 254 mm	0.109"