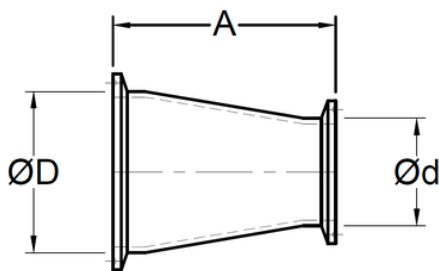
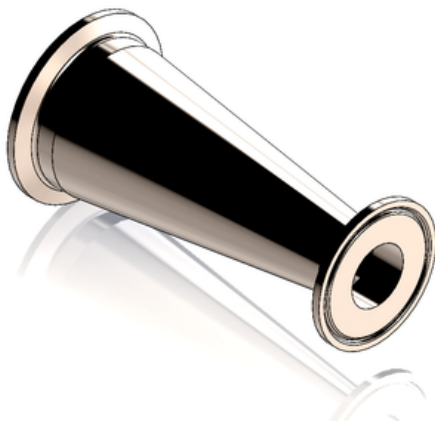


Reducción Concéntrica BPE, extremos ferulados

Hygienic clamp joint: Concentric Reducer



CODIGO	SIZE	ØD	Ød	A
A19 07x05	3/4" x 1/2"	0.750" 19.05 mm	0.500" 12.7 mm	2.000" 50.8 mm
A19 10x05	1" x 1/2"	1.000" 25.4 mm	0.500" 12.7 mm	2.500" 63.5 mm
A19 10x07	1" x 3/4"	1.000" 25.4 mm	0.750" 19.05 mm	2.000" 50.8 mm
A19 15x05	1-1/2" x 1/2"	1.500" 38.1 mm	0.500" 12.7 mm	3.500" 88.9 mm
A19 15x07	1-1/2" x 3/4"	1.500" 38.1 mm	0.750" 19.05 mm	3.000" 76.2 mm
A19 15x10	1-1/2" x 1"	1.500" 38.1 mm	1.000" 25.4 mm	3.000" 76.2 mm
A19 20x05	2" x 1/2"	2.000" 50.8 mm	0.500" 12.7 mm	5.500" 139.7 mm
A19 20x07	2" x 3/4"	2.000" 50.8 mm	0.750" 19.05 mm	5.000" 127 mm
A19 20x10	2" x 1"	2.000" 50.8 mm	1.000" 25.4 mm	5.000" 127 mm
A19 20x15	2" x 1-1/2"	2.000" 50.8 mm	1.500" 38.1 mm	3.000" 76.2 mm
A19 25x15	2-1/2" x 1-1/2"	2.500" 63.5 mm	1.500" 38.1 mm	5.000" 127 mm
A19 25x20	2-1/2" x 2"	2.500" 63.5 mm	2.000" 50.8 mm	3.000" 76.2 mm
A19 30x15	3" x 1-1/2"	3.000" 76.2 mm	1.500" 38.1 mm	7.000" 177.8 mm
A19 30x20	3" x 2"	3.000" 76.2 mm	2.000" 50.8 mm	5.000" 127 mm
A19 30x25	3" x 2-1/2"	3.000" 76.2 mm	2.500" 63.5 mm	3.000" 76.2 mm
A19 40x20	4" x 2"	4.000" 76.2 mm	2.000" 50.8 mm	9.125" 231.775 mm
A19 40x25	4" x 2-1/2"	4.000" 76.2 mm	2.500" 63.5 mm	7.125" 180.975 mm
A19 40x30	4" x 3"	4.000" 76.2 mm	3.000" 76.2 mm	5.125" 130.175 mm
A19 60x30	6" x 3"	6.000" 152.4 mm	3.000" 76.2 mm	7.500" 190.5 mm
A19 60x40	6" x 4"	6.000" 152.4 mm	4.000" 76.2 mm	7.625" 193.675 mm