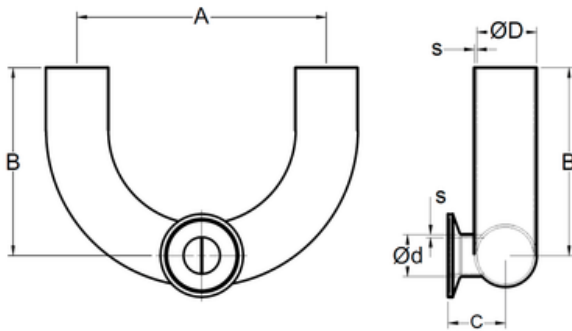


Punto de Uso con salida horizontal,
extremos sold x sold x clamp
3A 180° Tees Type U



SIZE	ØD	Ød	A	B	C	s	# Parte / Ac. Inox 304	# Parte / Ac. Inox 316L
3/4"x1/2"	0.750" 19.05 mm	0.500" 12.7 mm	4.500" 114.3 mm	3.750" 98.25 mm	1.000" 25.4 mm	0.065" 1.65 mm	C69304 0705	C69316L 0705
1"x1/2"	1.000" 25.4 mm	0.500" 12.7 mm	4.500" 114.3 mm	3.750" 98.25 mm	1.125" 28.575 mm	0.065" 1.65 mm	C69304 1005	C69316L 1005
1"x3/4"	1.000" 25.4 mm	0.750" 19.05 mm	4.500" 114.3 mm	3.750" 98.25 mm	1.125" 28.575 mm	0.065" 1.65 mm	C69304 1007	C69316L 1007
1-1/2"x1/2"	1.500" 38.1 mm	0.500" 12.7 mm	6.000" 152.4 mm	4.500" 114.3 mm	1.375" 34.925 mm	0.065" 1.65 mm	C69304 1505	C69316L 1505
1-1/2"x3/4"	1.500" 38.1 mm	0.750" 19.05 mm	6.000" 152.4 mm	4.500" 114.3 mm	1.375" 34.925 mm	0.065" 1.65 mm	C69304 1507	C69316L 1507
1-1/2"x1"	1.500" 38.1 mm	1.000" 25.4 mm	6.000" 152.4 mm	4.500" 114.3 mm	1.375" 34.925 mm	0.065" 1.65 mm	C69304 1510	C69316L 1510
2" x 1/2"	2.000" 50.8 mm	0.500" 12.7 mm	6.000" 152.4 mm	5.000" 127 mm	1.625" 41.275 mm	0.065" 1.65 mm	C69304 2005	C69316L 2005
2" x 3/4"	2.000" 50.8 mm	0.750" 19.05 mm	6.000" 152.4 mm	5.000" 127 mm	1.625" 41.275 mm	0.065" 1.65 mm	C69304 2007	C69316L 2007
2" x 1"	2.000" 50.8 mm	1.000" 25.4 mm	6.000" 152.4 mm	5.000" 127 mm	1.625" 41.275 mm	0.065" 1.65 mm	C69304 2010	C69316L 2010
2" x 1-1/2"	2.000" 50.8 mm	1.500" 38.1 mm	6.000" 152.4 mm	5.000" 127 mm	1.625" 41.275 mm	0.065" 1.65 mm	C69304 2015	C69316L 2015
2-1/2"x1/2"	2.500" 63.5 mm	0.500" 12.7 mm	7.500" 190.5 mm	5.750" 146.05 mm	1.875" 47.625 mm	0.065" 1.65 mm	C69304 2505	C69316L 2505
2-1/2"x3/4"	2.500" 63.5 mm	0.750" 19.05 mm	7.500" 190.5 mm	5.750" 146.05 mm	1.875" 47.625 mm	0.065" 1.65 mm	C69304 2507	C69316L 2507
2-1/2"x1"	2.500" 63.5 mm	1.000" 25.4 mm	7.500" 190.5 mm	5.750" 146.05 mm	1.875" 47.625 mm	0.065" 1.65 mm	C69304 2510	C69316L 2510
2-1/2"x1-1/2"	2.500" 63.5 mm	1.500" 38.1 mm	7.500" 190.5 mm	5.750" 146.05 mm	1.875" 47.625 mm	0.065" 1.65 mm	C69304 2515	C69316L 2515
2-1/2"x2"	2.500" 63.5 mm	2.000" 50.8 mm	7.500" 190.5 mm	5.750" 146.05 mm	1.875" 47.625 mm	0.065" 1.65 mm	C69304 2520	C69316L 2520
3" x 1/2"	3.000" 76.2 mm	0.500" 12.7 mm	9.000" 228.6 mm	6.500" 165.1 mm	2.125" 53.975 mm	0.065" 1.65 mm	C69304 3005	C69316L 3005
3" x 3/4"	3.000" 76.2 mm	0.750" 19.05 mm	9.000" 228.6 mm	6.500" 165.1 mm	2.125" 53.975 mm	0.065" 1.65 mm	C69304 3007	C69316L 3007
3" x 1"	3.000" 76.2 mm	1.000" 25.4 mm	9.000" 228.6 mm	6.500" 165.1 mm	2.125" 53.975 mm	0.065" 1.65 mm	C69304 3010	C69316L 3010
3" x 1-1/2"	3.000" 76.2 mm	1.500" 38.1 mm	9.000" 228.6 mm	6.500" 165.1 mm	2.125" 53.975 mm	0.065" 1.65 mm	C69304 3015	C69316L 3015
3" x 2"	3.000" 76.2 mm	2.000" 50.8 mm	9.000" 228.6 mm	6.500" 165.1 mm	2.125" 53.975 mm	0.065" 1.65 mm	C69304 3020	C69316L 3020
3" x 2-1/2"	3.000" 76.2 mm	2.500" 63.5 mm	9.000" 228.6 mm	6.500" 165.1 mm	2.125" 53.975 mm	0.065" 1.65 mm	C69304 3025	C69316L 3025