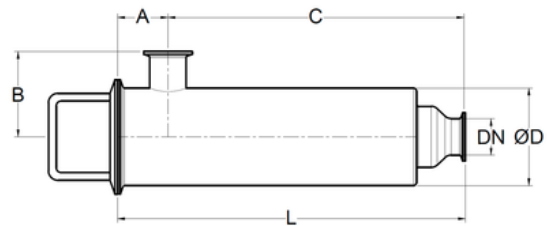


Dimensiones generales

Filtro Salida Lateral



| Tamaño de conexión (DN) | Conexiones férula - clamp | | | | | Área efectiva de Filtración cm ² | # Parte / Ac. Inox 304 | # Parte / Ac. Inox 316L |
|-------------------------|---------------------------|-----------------------|--------------------|---------------------|-------------------|---|------------------------|-------------------------|
| | Largo (L) | ØD Diámetro | A | B | C | | | |
| SHORT | 1" | 15.375" 390.525 mm | 4.000" 101.6 mm | 2.000" 50.8 mm | 3.500" 88.9 mm | 13.375" 339.725 mm | 720 | E02S304 10 E02S316L 10 |
| | 1-1/2" | 15.375" 390.525 mm | 4.000" 101.6 mm | 2.125" 53.975 mm | 3.500" 88.9 mm | 13.250" 336.55 mm | 720 | E02S304 15 E02S316L 15 |
| | 2" | 15.375" 390.525 mm | 4.000" 101.6 mm | 2.125" 53.975 mm | 3.500" 88.9 mm | 13.250" 336.55 mm | 720 | E02S304 20 E02S316L 20 |
| | 2-1/2" | 15.375" 390.525 mm | 4.000" 101.6 mm | 2.375" 60.325 mm | 3.500" 88.9 mm | 13.000" 330.2 mm | 720 | E02S304 25 E02S316L 25 |
| | 3" | 15.375" 390.525 mm | 4.000" 101.6 mm | 2.750" 69.85 mm | 3.500" 88.9 mm | 12.625" 320.675 mm | 720 | E02S304 30 E02S316L 30 |
| LONG | 1" | 32.375" 898.525 mm | 4.000" 101.6 mm | 2.000" 50.8 mm | 3.500" 88.9 mm | 30.375" 771.525 mm | 1700 | E02L304 10 E02L316L 10 |
| | 1-1/2" | 32.375" 898.525 mm | 4.000" 101.6 mm | 2.125" 53.975 mm | 3.500" 88.9 mm | 30.250" 768.35 mm | 1700 | E02L304 15 E02L316L 15 |
| | 2" | 32.375" 898.525 mm | 4.000" 101.6 mm | 2.125" 53.975 mm | 3.500" 88.9 mm | 30.250" 768.35 mm | 1700 | E02L304 20 E02L316L 20 |
| | 2-1/2" | 32.375" 898.525 mm | 4.000" 101.6 mm | 2.375" 60.325 mm | 3.500" 88.9 mm | 30.000" 762 mm | 1700 | E02L304 25 E02L316L 25 |
| | 3" | 32.375" 898.525 mm | 4.000" 101.6 mm | 2.750" 69.85 mm | 3.500" 88.9 mm | 29.625" 752.475 mm | 1700 | E02L304 30 E02L316L 30 |