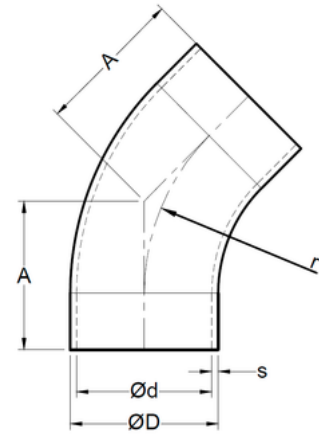
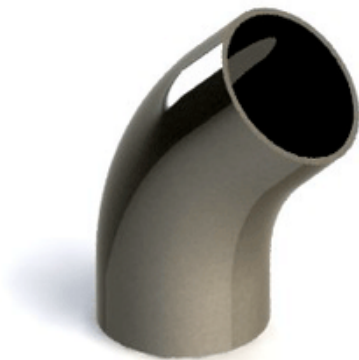


Codo de 45° con Tangentes *3A 45° Elbow with Tangents*



SIZE	ØD	Ød	A	r	s	# Parte / Ac. Inox 304	# Parte / Ac. Inox 316L
3/4"	0.750" 19.05 mm	0.620" 15.758 mm	0.765" 19.400 mm	1.125" 28.575 mm	0.065" 1.65 mm	C03304 07	C03316L 07
1"	1.000" 25.4 mm	0.870" 22.098 mm	1.190" 30.226 mm	1.500" 38.1 mm	0.065" 1.65 mm	C03304 10	C03316L 10
1-1/2"	1.500" 38.1 mm	1.370" 34.798 mm	1.625" 41.275 mm	2.250" 57.15 mm	0.065" 1.65 mm	C03304 15	C03316L 15
2"	2.000" 50.8 mm	1.870" 47.498 mm	2.310" 58.674 mm	3.000" 76.2 mm	0.065" 1.65 mm	C03304 20	C03316L 20
2-1/2"	2.500" 63.5 mm	2.370" 60.198 mm	3.000" 76.2 mm	3.750" 95.25 mm	0.065" 1.65 mm	C03304 25	C03316L 25
3"	3.000" 76.2 mm	2.870" 72.898 mm	3.690" 93.726 mm	4.500" 114.3 mm	0.065" 1.65 mm	C03304 30	C03316L 30
4"	4.000" 101.6 mm	3.834" 97.383 mm	4.810" 122.174 mm	6.000" 152.4 mm	0.083" 2.108 mm	C03304 40	C03316L 40