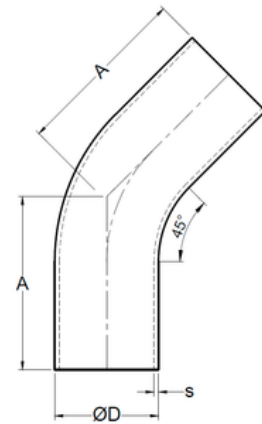
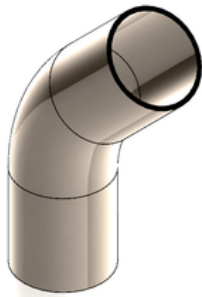


## Codo BPE de 45°

*Automatic tube weld 45° elbow*



| CODIGO | SIZE   | ØD                 | A                   | s                  |
|--------|--------|--------------------|---------------------|--------------------|
| A02 05 | 1/2"   | 0.500"<br>12.7 mm  | 2.250"<br>57.15 mm  | 0.065"<br>1.65 mm  |
| A02 07 | 3/4"   | 0.750"<br>19.05 mm | 2.250"<br>57.15 mm  | 0.065"<br>1.65 mm  |
| A02 10 | 1"     | 1.000"<br>25.4 mm  | 2.250"<br>57.15 mm  | 0.065"<br>1.65 mm  |
| A02 15 | 1-1/2" | 1.500"<br>38.1 mm  | 2.500"<br>63.5 mm   | 0.065"<br>1.65 mm  |
| A02 20 | 2"     | 2.000"<br>50.8 mm  | 3.000"<br>76.2 mm   | 0.065"<br>1.65 mm  |
| A02 25 | 2-1/2" | 2.500"<br>63.5 mm  | 3.375"<br>85.725 mm | 0.065"<br>1.65 mm  |
| A02 30 | 3"     | 3.000"<br>76.2 mm  | 3.625"<br>92.075 mm | 0.065"<br>1.65 mm  |
| A02 40 | 4"     | 4.000"<br>101.6 mm | 4.500"<br>114.3 mm  | 0.083"<br>2.108 mm |
| A02 60 | 6"     | 6.000"<br>152.4 mm | 6.250"<br>158.75 mm | 0.109"<br>2.768 mm |