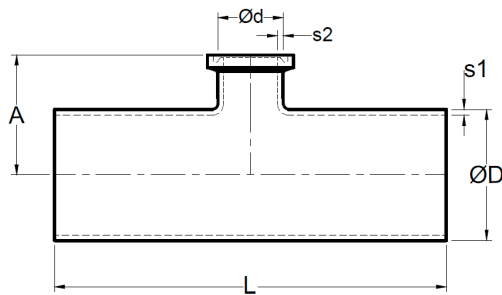
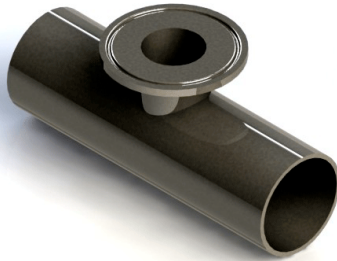


Tee reducción centro corto, extremos soldable x soldable x clamp *3A Eccentric Short Tees with Ferrule*



SIZE	ØD	Ød	L	s1	A	s2	# Parte / Ac. Inox 304	# Parte / Ac. Inox 316L
3/4"x1/2"	0.750" 19.05 mm	0.500" 12.7 mm	4.000" 101.6 mm	0.065" 1.65 mm	1.000" 25.4 mm	0.065" 1.65 mm	C63304 0705	C63316L 0705
1"x1/2"	1.000" 25.4 mm	0.500" 12.7 mm	4.250" 107.95 mm	0.065" 1.65 mm	1.125" 28.575 mm	0.065" 1.65 mm	C63304 1005	C63316L 1005
1"x3/4"	1.000" 25.4 mm	0.750" 19.05 mm	4.250" 107.95 mm	0.065" 1.65 mm	1.125" 28.575 mm	0.065" 1.65 mm	C63304 1007	C63316L 1007
1-1/2"x1/2"	1.500" 38.1 mm	0.500" 12.7 mm	4.750" 120.65 mm	0.065" 1.65 mm	1.375" 34.925 mm	0.065" 1.65 mm	C63304 1505	C63316L 1505
1-1/2"x3/4"	1.500" 38.1 mm	0.750" 19.05 mm	4.750" 120.65 mm	0.065" 1.65 mm	1.375" 34.925 mm	0.065" 1.65 mm	C63304 1507	C63316L 1507
1-1/2"x1"	1.500" 38.1 mm	1.000" 25.4 mm	4.750" 120.65 mm	0.065" 1.65 mm	1.375" 34.925 mm	0.065" 1.65 mm	C63304 1510	C63316L 1510
2" x 1/2"	2.000" 50.8 mm	0.500" 12.7 mm	5.750" 146.05 mm	0.065" 1.65 mm	1.625" 41.275 mm	0.065" 1.65 mm	C63304 2005	C63316L 2005
2" x 3/4"	2.000" 50.8 mm	0.750" 19.05 mm	5.750" 146.05 mm	0.065" 1.65 mm	1.625" 41.275 mm	0.065" 1.65 mm	C63304 2007	C63316L 2007
2" x 1"	2.000" 50.8 mm	1.000" 25.4 mm	5.750" 146.05 mm	0.065" 1.65 mm	1.625" 41.275 mm	0.065" 1.65 mm	C63304 2010	C63316L 2010
2" x 1-1/2"	2.000" 50.8 mm	1.500" 38.1 mm	5.750" 146.05 mm	0.065" 1.65 mm	1.625" 41.275 mm	0.065" 1.65 mm	C63304 2015	C63316L 2015
2-1/2"x1/2"	2.500" 63.5 mm	0.500" 12.7 mm	6.250" 158.75 mm	0.065" 1.65 mm	1.875" 47.625 mm	0.065" 1.65 mm	C63304 2505	C63316L 2505
2-1/2"x3/4"	2.500" 63.5 mm	0.750" 19.05 mm	6.250" 158.75 mm	0.065" 1.65 mm	1.875" 47.625 mm	0.065" 1.65 mm	C63304 2507	C63316L 2507
2-1/2"x1"	2.500" 63.5 mm	1.000" 25.4 mm	6.250" 158.75 mm	0.065" 1.65 mm	1.875" 47.625 mm	0.065" 1.65 mm	C63304 2510	C63316L 2510
2-1/2"x1-1/2"	2.500" 63.5 mm	1.500" 38.1 mm	6.250" 158.75 mm	0.065" 1.65 mm	1.875" 47.625 mm	0.065" 1.65 mm	C63304 2515	C63316L 2515
2-1/2"x2"	2.500" 63.5 mm	2.000" 50.8 mm	6.250" 158.75 mm	0.065" 1.65 mm	1.875" 47.625 mm	0.065" 1.65 mm	C63304 2520	C63316L 2520
3" x 1/2"	3.000" 76.2 mm	0.500" 12.7 mm	6.750" 171.45 mm	0.065" 1.65 mm	2.125" 53.975 mm	0.065" 1.65 mm	C63304 3005	C63316L 3005
3" x 3/4"	3.000" 76.2 mm	0.750" 19.05 mm	6.750" 171.45 mm	0.065" 1.65 mm	2.125" 53.975 mm	0.065" 1.65 mm	C63304 3007	C63316L 3007
3" x 1"	3.000" 76.2 mm	1.000" 25.4 mm	6.750" 171.45 mm	0.065" 1.65 mm	2.125" 53.975 mm	0.065" 1.65 mm	C63304 3010	C63316L 3010
3" x 1-1/2"	3.000" 76.2 mm	1.500" 38.1 mm	6.750" 171.45 mm	0.065" 1.65 mm	2.125" 53.975 mm	0.065" 1.65 mm	C63304 3015	C63316L 3015
3" x 2"	3.000" 76.2 mm	2.000" 50.8 mm	6.750" 171.45 mm	0.065" 1.65 mm	2.125" 53.975 mm	0.065" 1.65 mm	C63304 3020	C63316L 3020
3" x 2-1/2"	3.000" 76.2 mm	2.500" 63.5 mm	6.750" 171.45 mm	0.065" 1.65 mm	2.125" 53.975 mm	0.065" 1.65 mm	C63304 3025	C63316L 3025
4" x 1/2"	4.000" 101.6 mm	0.500" 12.7 mm	7.750" 196.85 mm	0.083" 2.108 mm	2.625" 66.675 mm	0.065" 1.65 mm	C63304 4005	C63316L 4005
4" x 3/4"	4.000" 101.6 mm	0.750" 19.05 mm	7.750" 196.85 mm	0.083" 2.108 mm	2.625" 66.675 mm	0.065" 1.65 mm	C63304 4007	C63316L 4007
4" x 1"	4.000" 101.6 mm	1.000" 25.4 mm	7.750" 196.85 mm	0.083" 2.108 mm	2.625" 66.675 mm	0.065" 1.65 mm	C63304 4010	C63316L 4010
4" x 1-1/2"	4.000" 101.6 mm	1.500" 38.1 mm	7.750" 196.85 mm	0.083" 2.108 mm	2.625" 66.675 mm	0.065" 1.65 mm	C63304 4015	C63316L 4015
4" x 2"	4.000" 101.6 mm	2.000" 50.8 mm	7.750" 196.85 mm	0.083" 2.108 mm	2.625" 66.675 mm	0.065" 1.65 mm	C63304 4020	C63316L 4020
4" x 2-1/2"	4.000" 101.6 mm	2.500" 63.5 mm	7.750" 196.85 mm	0.083" 2.108 mm	2.625" 66.675 mm	0.065" 1.65 mm	C63304 4025	C63316L 4025
4" x 3"	4.000" 101.6 mm	3.000" 76.2 mm	7.750" 196.85 mm	0.083" 2.108 mm	2.625" 66.675 mm	0.065" 1.65 mm	C63304 4030	C63316L 4030
6" x 1/2"	6.000" 152.4 mm	0.500" 12.7 mm	10.000" 254 mm	0.109" 2.768 mm	3.625" 92.075 mm	0.065" 1.65 mm	C63304 6005	C63316L 6005
6" x 1-1/2"	6.000" 152.4 mm	1.500" 38.1 mm	10.000" 254 mm	0.109" 2.768 mm	3.625" 92.075 mm	0.065" 1.65 mm	C63304 6015	C63316L 6015
6" x 3"	6.000" 152.4 mm	3.000" 76.2 mm	10.000" 254 mm	0.109" 2.768 mm	3.625" 92.075 mm	0.065" 1.65 mm	C63304 6030	C63316L 6030
6" x 4"	6.000" 152.4 mm	4.000" 101.6 mm	10.000" 254 mm	0.109" 2.768 mm	3.750" 95.25 mm	0.083" 2.108 mm	C63304 6040	C63316L 6040